

Arroyo Elementary Programme of Inquiry

Transitional Kindergarten



An inquiry into the **nature of the self**; beliefs and values; personal, physical, mental, social and spiritual health; human relationships including families, friends, communities, and cultures; rights and responsibilities; what it means to be human.

An inquiry into orientation in place and time; personal histories; homes and journeys; the discoveries, explorations and migrations of humankind; the relationships between and the interconnectedness of individuals and civilizations, from local and global perspectives.

An inquiry into the ways in which we discover and express ideas, feelings, nature, culture, beliefs and values; the ways in which we reflect on, extend and enjoy our creativity; our appreciation for the aesthetic.

An inquiry into the natural world and its laws; the interaction between the natural world (physical and biological) and human societies; how humans use their understanding of scientific principles; the impact of scientific and technological advances on society and the environment.

An inquiry into the interconnectedness of human-made systems and communities; the structure and function of organizations; societal decision-making; economic activities and their impact on humankind and the environment.

An inquiry into the rights and responsibilities in the struggle to share finite resources with other people and with other living things; communities and the relationship within and between them; access to equal opportunities; peace and conflict resolution.

*August-September
April-May*

March-April

October-February

September-October

February-March

People grow and change

People express ideas and feelings

Our senses help us understand the world

Communities develop expectations

Living things have needs

An inquiry into:

- me and my feelings
- families and friends
- growing and changing

An inquiry into:

- telling stories
- how we express ourselves through music
- how we use art to express ourselves

An inquiry into:

- keeping our bodies healthy
- how senses help us understand ourselves
- how the weather and seasons affect us

An inquiry into:

- our community
- how school works
- our responsibility as a community member

An inquiry into:

- what animals need to survive
- animal homes
- the features of different animals

Key Concepts:

- Perspective
- Function
- Change

Related Concepts:

- Similarities, differences, growth

Key Concepts:

- Connection
- Function
- Perspective

Related Concepts:

- Communication, imagination, beliefs

Key Concepts:

- Form
- Change
- Responsibility

Related Concepts:

- Well-being, systems, forces

Key Concepts:

- Form
- Function
- Responsibility

Related Concepts:

- Community, systems, roles

Key Concepts:

- Causation
- Form
- Function

Related Concepts:

- Survival, adaptation, properties

Arroyo Elementary Programme of Inquiry

Kindergarten



An inquiry into the nature of the self; beliefs and values; personal, physical, mental, social and spiritual health; human relationships including families, friends, communities, and cultures; rights and responsibilities; what it means to be human.

An inquiry into orientation in place and time; personal histories; homes and journeys; the discoveries, explorations and migrations of humankind; the relationships between and the interconnectedness of individuals and civilizations, from local and global perspectives.

An inquiry into the ways in which we discover and express ideas, feelings, nature, culture, beliefs and values; the ways in which we reflect on, extend and enjoy our creativity; our appreciation for the aesthetic.

An inquiry into the natural world and its laws; the interaction between the natural world (physical and biological) and human societies; how humans use their understanding of scientific principles; the impact of scientific and technological advances on society and the environment.

An inquiry into the interconnectedness of human-made systems and communities; the structure and function of organizations; societal decision-making; economic activities and their impact on humankind and the environment.

An inquiry into the rights and responsibilities in the struggle to share finite resources with other people and with other living things; communities and the relationship within and between them; access to equal opportunities; peace and conflict resolution.

October-December

March-May

January-March

August-September

Curiosity leads to learning

We communicate in different ways

Forces move our world

Citizens learn and work together

An inquiry into:

- curiosity
- how curiosity changes perspective
- connecting curiosity to learning

An inquiry into:

- expressing feelings in art
- expressing feelings in music
- expressing feelings in dance

An inquiry into:

- what force is
- the causes of motion and the effects of force
- how forces affect the weather

An inquiry into:

- what a community is
- what the rights and duties of a citizen in a community are
- how we reflect about the actions in the community

Key Concepts:

- Form
- Change
- Connection

Related Concepts:

- living vs non-living, discovery, ownership

Key Concepts:

- Perspective
- Connection
- Function

Related Concepts:

- Expression, creativity, reflection

Key Concepts:

- Form
- Causation
- Responsibility

Related Concepts:

- Force, Movement, Transformation

Key Concepts:

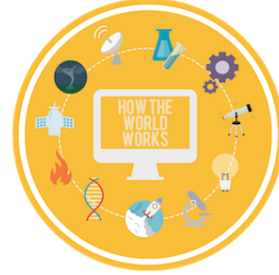
- Form
- Function
- Responsibility

Related Concepts:

- Structure, role, accepting

Arroyo Elementary Programme of Inquiry

First Grade



An inquiry into the nature of the self; beliefs and values; personal, physical, mental, social and spiritual health; human relationships including families, friends, communities, and cultures; rights and responsibilities; what it means to be human.

An inquiry into **orientation in place and time**; personal histories; homes and journeys; the discoveries, explorations and migrations of humankind; the relationships between and the interconnectedness of individuals and civilizations, from local and global perspectives.

An inquiry into the ways in which we discover and express ideas, feelings, nature, culture, beliefs and values; the ways in which we reflect on, extend and enjoy our creativity; our appreciation for the aesthetic.

An inquiry into the natural world and its laws; the interaction between the natural world (physical and biological) and human societies; how humans use their understanding of scientific principles; **the impact of scientific and technological advances on society and the environment**

An inquiry into the interconnectedness of human-made systems and communities; the structure and function of organizations; societal decision-making; economic activities and their impact on humankind and the environment.

An inquiry into the rights and responsibilities in the struggle to share finite resources with other people and with other living things; **communities and the relationship within and between them**; access to equal opportunities; peace and conflict resolution.

August-September

February-April

January-February

November-December

May

September-November

Choices we make affect us

Time and place affect the way we live

Communities commemorate culture

Light and sound aid communication

Needs and wants have a cost

Living things adapt to meet their needs

An inquiry into:

- health and safety
- the risks of unhealthy choices
- the changes we can make in our choices

An inquiry into:

- when and where I live
- life in other places
- life in other times

An inquiry into:

- symbolism
- how communities recognize events, people, and values
- symbols in other countries

An inquiry into:

- how light and shadows work
- the effects of sky patterns
- using light and sound to communicate

An inquiry into:

- the difference between needs and wants
- why people work
- how we will meet our needs and wants when we grow up

An inquiry into:

- the characteristics that help living things survive
- solving human problems based on characteristics of other living things
- human responsibility to protect living things

Key Concepts:

- Responsibility
- Causation
- Change

Related Concepts:

- Health, safety, choices

Key Concepts:

- Connection
- Perspective
- Change

Related Concepts:

- Relationships, opinions/beliefs, transformation

Key Concepts:

- Causation
- Form
- Perspective

Related Concepts:

- Similarities and differences, impact, beliefs

Key Concepts:

- Function
- Causation
- Perspective

Related Concepts:

- Patterns, cycles, communication

Key Concepts:

- Form
- Responsibility
- Function

Related Concepts:

- Similarities and differences, quantity

Key Concepts:

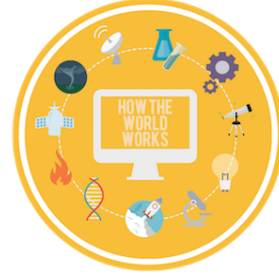
- Function
- Connection
- Responsibility

Related Concepts:

- Biomimicry, adaptations, conservation

Arroyo Elementary Programme of Inquiry

Second Grade



An inquiry into the nature of the self; beliefs and values; personal, physical, mental, social and spiritual health; human relationships including families, friends, communities, and cultures; rights and responsibilities; what it means to be human.

An inquiry into orientation in place and time; **personal histories**; homes and journeys; the discoveries, explorations and migrations of humankind; the relationships between and the interconnectedness of individuals and civilizations, from local and global perspectives.

An inquiry into the ways in which we discover and express ideas, feelings, nature, culture, beliefs and values; the ways in which we reflect on, extend and enjoy our creativity; our appreciation for the aesthetic.

An inquiry into **the natural world and its laws**; the interaction between the natural world (physical and biological) and human societies; how humans use their understanding of scientific principles; the impact of scientific and technological advances on society and the environment.

An inquiry into **the interconnectedness** of human-made systems and communities; the structure and function of organizations; societal decision-making; economic activities and their impact on humankind and the environment.

An inquiry into **the rights and responsibilities** in the struggle to share finite resources with other people and **with other living things**; communities and the relationship within and between them; access to equal opportunities; peace and conflict resolution.

February-April

November-December

April-May

September-October

August-September

January-February

Laws protect citizens

Past events influence the present

Discoveries happen by questioning, testing, and expressing ideas

The world provides basic needs

Communities depend on one another

Landscape changes affect the environment

An inquiry into:

- rules and laws
- governments' roles in communities
- the economy

An inquiry into:

- past events
- the values of the past and present
- structures of the past and present

An inquiry into:

- the properties of matter
- changes in materials
- expressing ideas

An inquiry into:

- what plants need to survive
- how plants depend on animals
- living things in habitats

An inquiry into:

- the purposes of different communities
- changes of communities
- how communities depend on one another

An inquiry into:

- the slow changes of Earth's landscape
- The quick changes of Earth's landscape
- designing solutions to slow landscape changes

Key Concepts:

- Form
- Connection
- Perspective

Related Concepts:

- Government, laws, economy

Key Concepts:

- Perspective
- Change
- Causation

Related Concepts:

- History, family, movement

Key Concepts:

- Form
- Change
- Perspective

Related Concepts:

- Similarities and differences, beliefs

Key Concepts:

- Function
- Connection
- Causation

Related Concepts:

- Interdependence, structure, cycles

Key Concepts:

- Function
- Change
- Connection

Related Concepts:

- Role, transformation, relationships

Key Concepts:

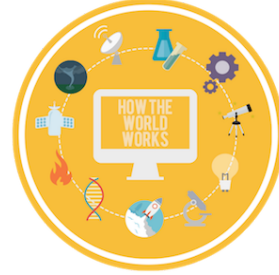
- Change
- Causation
- Responsibility

Related Concepts:

- Properties, consequences, impact

Arroyo Elementary Programme of Inquiry

Third Grade



An inquiry into the nature of the self; beliefs and values; personal, physical, mental, social and spiritual health; human relationships including families, friends, communities, and cultures; rights and responsibilities; what it means to be human.

An inquiry into orientation in place and time; personal histories; homes and journeys; the discoveries, explorations and migrations of humankind; the relationships between and the interconnectedness of individuals and civilizations, from local and global perspectives.

An inquiry into the ways in which we discover and express ideas, feelings, nature, culture, beliefs and values; the ways in which we reflect on, extend and enjoy our creativity; our appreciation for the aesthetic.

An inquiry into the natural world and its laws; the interaction between the natural world (physical and biological) and human societies; how humans use their understanding of scientific principles; the impact of scientific and technological advances on society and the environment.

An inquiry into the interconnectedness of human-made systems and communities; the structure and function of organizations; societal decision-making; economic activities and their impact on humankind and the environment.

An inquiry into the rights and responsibilities in the struggle to share finite resources with other people and with other living things; communities and the relationship within and between them; access to equal opportunities; peace and conflict resolution.

September-November

August-September

April-May

January-February

February-March

September-October

Traits influence identity

Migrations impact communities

Creativity inspires discoveries

Patterns help us understand how things work

Structures create order

Change affects survival

An inquiry into:

- the circle of life
- inherited traits and learned traits
- cultures and traditions

An inquiry into:

- California migrations
- how communities are established
- the impact on established communities

An inquiry into:

- the interactions between two objects
- designing solutions for problems in our world
- the interconnection between art and science

An inquiry into:

- Causes of natural patterns
- changes in patterns
- identifying and predicting patterns

An inquiry into:

- different human organizational structures
- the purpose of the different forms of organizations
- an individual's role within a structure

An inquiry into:

- characteristics of different environments
- the effects of changes in an environment
- human response and responsibility to environmental changes

Key Concepts:

- Form
- Function
- Connection

Related Concepts:

- Similarities/differences, identity, culture

Key Concepts:

- Form
- Causation
- Perspective

Related Concepts:

- Settlement, movement, systems

Key Concepts:

- Connection
- Function
- Perspective

Related Concepts:

- Balance, force, movement

Key Concepts:

- Causation
- Change
- Form

Related Concepts:

- Patterns, sequence, cycles

Key Concepts:

- Form
- Function
- Responsibility

Related Concepts:

- Structures, similarities, role, communication

Key Concepts:

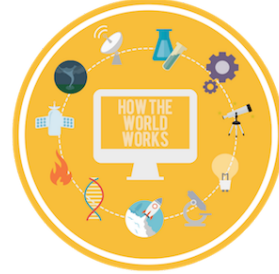
- Form
- Change
- Responsibility

Related Concepts:

- Adaptation consequences,

Arroyo Elementary Programme of Inquiry

Fourth Grade



An inquiry into the nature of the self; beliefs and values; personal, physical, mental, social and spiritual health; human relationships including families, friends, communities, and cultures; **rights and responsibilities**; what it means to be human.

An inquiry into orientation in place and time; personal histories; homes and journeys; **the discoveries, explorations and migrations of humankind**; the relationships between and the interconnectedness of individuals and civilizations, from local and global perspectives.

An inquiry into the ways in which we discover and express ideas, feelings, nature, culture, beliefs and values; the ways in which we reflect on, extend and enjoy our creativity; our appreciation for the aesthetic.

An inquiry into the natural world and its laws; the interaction between the natural world (physical and biological) and human societies; **how humans use their understanding of scientific principles**; the impact of scientific and technological advances on society and the environment.

An inquiry into the interconnectedness of human-made systems and communities; **the structure and function of organizations**; societal decision-making; economic activities and their impact on humankind and the environment.

An inquiry into the rights and responsibilities in the struggle to share finite resources with other people and with other living things; communities and the relationship within and between them; access to equal opportunities; **peace and conflict resolution**.

August-September

February-April

November-December

January-February

September-October

April-May

Role models influence people's lives

Migrations impact living things

People express ideas in different ways

Natural and human-made systems are affected by cultural practices

Humans organize themselves in response to change

Solutions impact life

An inquiry into:

- the relationship between role models and people who look up to them
- how role models impact others
- how i impact others

An inquiry into:

- the form of migration
- the causes of migration
- the effects of migration on living things

An inquiry into:

- forms of expressing
- different literary genres
- different perspectives

An inquiry into:

- identifying parts of energy systems and how they are used
- human access to energy
- energy usage

An inquiry into:

- natural disasters
- the effects of geological changes on Earth
- the effects of geologic changes on global decisions/actions

An inquiry into:

- causes of problems
- different ways of solving problems
- the impact of how people solve problems on the quality of lives

Key Concepts:

- Connection
- Responsibility
- Perspective

Related Concepts:

- Interdependence

Key Concepts:

- Form
- Causation
- Change

Related Concepts:

- Migration, settlement, location

Key Concepts:

- Perspective
- Form
- Function

Related Concepts:

- Communication

Key Concepts:

- Form
- Change
- Perspective

Related Concepts:

- Properties, transformation, systems

Key Concepts:

- Function
- Causation
- Responsibility

Related Concepts:

- Impact, changes, properties

Key Concepts:

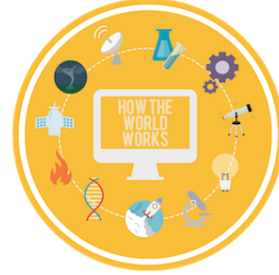
- Causation
- Perspective
- Responsibility

Related Concepts:

- Sequence, prejudice, ethics

Arroyo Elementary Programme of Inquiry

Fifth Grade



An inquiry into the nature of the self; beliefs and values; personal, physical, mental, social and spiritual health; human relationships including families, friends, communities, and cultures; rights and responsibilities; what it means to be human.

An inquiry into orientation in place and time; personal histories; homes and journeys; the discoveries, explorations and migrations of humankind; the relationships between and the interconnectedness of individuals and civilizations, from local and global perspectives.

An inquiry into the ways in which we discover and express ideas, feelings, nature, culture, beliefs and values; the ways in which we reflect on, extend and enjoy our creativity; our appreciation for the aesthetic.

An inquiry into the natural world and its laws; the interaction between the natural world (physical and biological) and human societies; how humans use their understanding of scientific principles; the impact of scientific and technological advances on society and the environment.

An inquiry into the interconnectedness of human-made systems and communities; the structure and function of organizations; societal decision-making; economic activities and their impact on humankind and the environment.

An inquiry into the rights and responsibilities in the struggle to share finite resources with other people and with other living things; communities and the relationship within and between them; access to equal opportunities; peace and conflict resolution.

April-May

October-November

February-May

August-September

January-March

December-January

Human migrations transform cultures

Explorations cause change

Exhibition
Values can be expressed in creative ways

All life forms are made of matter and require energy

Governing systems impact communities

Human communities impact water resources

An inquiry into:

- how native populations viewed westward expansion
- how westward expansion transformed native populations
- how current native demographics in North America have changed

An inquiry into:

- the consequences of change
- how exploration affects natural and human systems
- how consequences of change are viewed

An inquiry into:

- what is matter and energy
- how energy is transferred
- why energy is transferred

An inquiry into:

- the function of government
- the effects on communities
- how governments change

An inquiry into:

- Earth's systems
- how human communities impact Earth's systems
- maintaining freshwater resources

Key Concepts:

- Perspective
- Change
- Connection

Related Concepts:

- Adaptation, prejudice, interpretation

Key Concepts:

- Change
- Connection
- Perspective

Related Concepts:

- Relationships, beliefs, prejudice

Key Concepts:

- Form
- Connection
- Function

Related Concepts:

- Interdependence, energy

Key Concepts:

- Function
- Causation
- Change

Related Concepts:

- Systems, impact, sequences

Key Concepts:

- Form
- Perspective
- Responsibility

Related Concepts:

- Systems, behaviors, structures